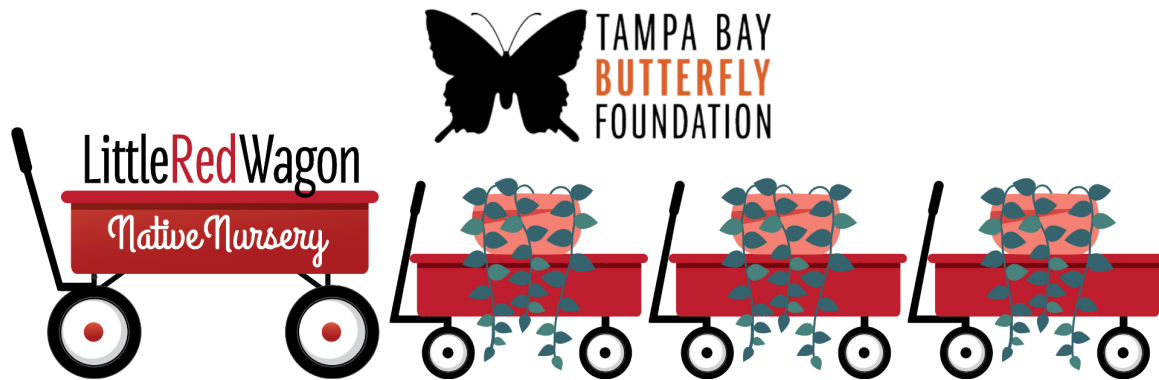


If you cannot see images, please [click here](#)

# LITTLE RED WAGONFUL

*Nurturing Nature One Wagon at a Time*

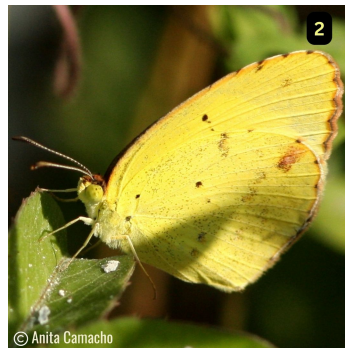
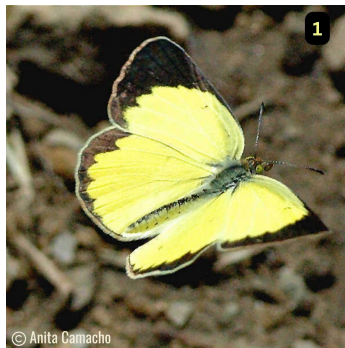


January 2024

“Our task must be to free ourselves by widening our circle of compassion to EMBRACE ALL LIVING CREATURES and the whole of nature and its beauty.” ~ Albert Einstein

**H**appy New Year! Thank you for helping us grow in 2023. We are excited as we look forward to serving you in 2024 and increasing the native plants in many more landscapes! Our new year's resolutions help kick-off healthy habits and some of us embark on new health club memberships in an attempt to curb or change old habits. Looking for another way to increase physical activity this year? Why not increase the time you spend outdoors nurturing nature or taking a hike in a natural area? Join us for one of our butterfly walks when they start up again in February. Also consider joining our Tampa Bay Butterfly Foundation volunteer team this year as we maintain butterfly gardens throughout our Tampa Bay community. See volunteer opportunity dates below in the “Diggin’ in to Restore Butterfly Habitat in Tampa Bay” section.

## Butterfly of the Month



Little Sulphur

Little Yellows are small, bright yellow or pale white beauties (wingspan typically only 1 ¼ to 1 ½ inches) with black forewing tips and a wide black border on the upperside of the wings. (See Photo #1.) The winter form butterflies are darker, more heavily patterned, and have dark pink edges. (See Photo #2.) When the butterfly's wings are closed, there are two black spots in the basal area of its hindwing. (See Photo #3.)

Females lay slender, spindle-shaped whitish eggs on new growth of host plants in the pea family. In our area, these host plants include Partridge Pea (*Chamaecrista fasciculata*), Sensitive Pea (*Chamaecrista nictitans*), and Sunshine Mimosa (*Mimosa strigillosa*). Caterpillars are small, slender, and bright green with a narrow yellow line that runs along each side. Here in Florida, there are at least three generations each year with caterpillars generally found from February through early November.

Little Yellows are usually abundant and commonly found throughout Florida. Adults are generalists that can be found in forest margins, fields, roadsides and disturbed areas, nectaring on flowers in the aster family including Goldenrods (*Solidago spp.*) and Asters (*Symphyotrichum spp.*). Little Yellows cannot survive freezing temperatures and populations from Florida will fly north each year to recolonize other areas, sometimes reaching Virginia and points even further to the north.

(Note – Little Red Wagon is in Hillsborough County – although we service Pinellas county – our location is Hillsborough). We've recently seen these beauties on hikes in Duette, Bradenton, and Osprey. Have you seen any closer to home? Please let us know if you see any here in Hillsborough County. Email your photos to [info@ButterflyTampa.com](mailto:info@ButterflyTampa.com). We'd love to see what you find!

## Host Plant Of The Month





### Partridge Pea - (*Chamaecrista fasciculata*)

Partridge Pea (*Chamaecrista fasciculata*) is an annual herbaceous wildflower or small shrub that grows to 3 feet tall and wide. With showy, 1" wide buttercup yellow flowers that bloom from late spring through early winter, Partridge Pea has alternate, pinnate-compound feathery leaves, with each leaf having 8-18 pairs of small leaflets. Leaves collapse when touched and also fold as darkness approaches.

Partridge Pea is native to a variety of habitats including scrubs, dunes, dry flatwoods, and open disturbed areas and can be found throughout Florida. It requires full sun, tolerates poor soil, and is drought tolerant once established.

The plant is a host for Cloudless Sulphur, Gray Hairstreak, Orange Sulphur, Sleepy Orange, Little Yellow, and Ceraunus Blue caterpillars. It's a great nectar source for a range of our native pollinators and its nectar is a favorite of many of our native bees. Interestingly, some leaf-cutting bees use portions of the petals for their brood chambers. And, just to round out the benefits for our native wildlife, Partridge Pea seeds are a major food source for northern bobwhites and other birds, including waterfowl and grassland birds, also regularly eat the plant's seeds. In addition, the plant provides cover for some game birds.

Like many members of the pea family, Partridge Pea improves soil fertility by fixing nitrogen. It is a stunning addition to a meadow where it can spread freely and is an excellent choice for restoration efforts to help stabilize eroded sites.

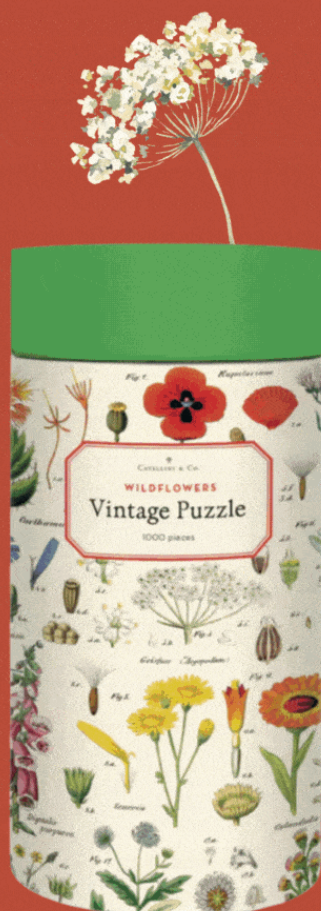
[SHOP NOW](#)

## Garden Swag



## Cavallini Papers & Co. 1,000 Piece Puzzle

### WILDFLOWERS



### Get Your SwagON!

Did you know January 29th is National Puzzle Day? Check out some of our nature-inspired puzzles from our vintage collection! Each botanical 1,000 piece puzzle comes packaged in a 10" tube and includes a muslin bag to keep all the pieces together. Assembled puzzle measures 22"W x 28"L. From bugs and insects to birds to flowers, these puzzles feature images from the Cavallini archives. Beautiful to frame after hours of fun putting together your masterpiece. Visit Little Red Wagon Native Nursery's Gift Shop to select from our full collection.

[SHOP NOW](#)

## Nectar Plant of the Month





### Sunshine Mimosa - (*Mimosa strigillosa*)

There's something fun – even whimsical – about this fast-growing groundcover with pink powderpuff-life flowers atop 6” tall thin stalks. A great alternative to turf, this perennial can withstand light foot traffic and occasional mowing. Although it thrives in full sun, Sunshine Mimosa (*Mimosa strigillosa*) can tolerate light shade and, once established, a range of moisture conditions. With an ability to fix nitrogen in the soil, this pea family member restores that important mineral nutrient to the soil without the use of chemicals. Sunshine Mimosa is the food source for one of the sulphur butterflies, the Little Yellow, and is also a great nectar source for honey bees and bottle bees.

This plant is also an incredibly fun way to introduce children to some of our native plants: its featherlike leaves fold up when touched, which is why it is also known as the “Sensitive plant”. While an evergreen, it thins out a little during our Florida winters. This plant will bloom when it's warm and, in warmer winters, the plant will bloom year-round. Sunshine Mimosa works well in areas requiring erosion control as well as the areas bordered by sidewalks and pavement known as “hellstrips.” In addition to being a wonderful addition to the landscape, it also does well in a hanging basket and looks nice with its vines draping down.

[SHOP NOW](#)



## Design With Edimentals



### Seagrape - (*Coccoloba uvifera*)

Traditionally, in Spain and many Latin American countries, people eat 12 grapes at midnight on New Year's Eve to bring good fortune and good health for each month of the new year. So, while not a true grape, we thought we'd include our native Seagrape as this month's edimental.

Seagrape (*Coccoloba uvifera*) is an evergreen, multi-stemmed large shrub or small tree that can easily reach heights of 50 feet in zones 10a-11. With round, leathery leaves that turn bright red in the late fall, inconspicuous ivory-colored flowers that grow as 8-10" spikes and attract a range of butterflies and bees, this plant is truly noted (and named!) for its clusters of ¾-inch grapes (female trees only) that ripen to a deep purple by late summer. These grapes can be used to make jellies, preserves, and wine if birds and small mammals don't devour them first. Note that Seagrape is dioecious: to obtain fruit set, the female requires that a male be planted nearby for proper pollination.

Seagrape is native to coastal hammocks, coastal scrub, coastal grasslands and beach strands. In Florida, it can be found along the Gulf Coast from Pinellas County south to the Keys and on the Atlantic Coast from southern Volusia County south. It requires full sun and sandy, well-drained soils and its high tolerance to salt and drought make this an ideal option for coastal landscapes where it can also help control dune



erosion. Grow Seagrape as an interesting specimen or prune a row of them to create a dense hedge and privacy fence.

(Please note: Seagrape leaves are slow to decompose, so be sure to only plant in areas where this won't be an issue.)

Do you celebrate the new year by eating 12 grapes? What are your family traditions for this holiday? Please let us know- we love to learn about the ways different cultures and families celebrate our holidays. Drop a note to [info@ButterflyTampa.com](mailto:info@ButterflyTampa.com), or better yet, stop by the store and chat with us.

**SHOP NOW**

## KIDS' CORNER

**TAMPA BAY BUTTERFLY FOUNDATION**  
Early Release Mondays  
1:30 - 3:00 pm  
September to May  
4111-A Henderson Blvd,  
in South Tampa

**BUG CLUB**

Kindergarten - Gr. 5

**BUTTERFLYTAMPA.COM**

SCAN ME

Our monthly Bug Club will be held during the school year on Early Release Mondays for Hillsborough County Public Schools. From 1:30 to 3:00 pm, Kindergarten to Grade 5 children will participate in various activities exploring nature and will meet animal ambassadors too! There will be no Bug Club activities on non-student days.

Each month, we will have a different theme and focus for kids to continue learning and discovering nature.



## JANUARY BUG CLUB:

This month we will dive into the world of plants! Kids will learn why different pollinators go to different types of flowers, they will understand pollination, and get to explore how clouds are formed. Each kid will learn how to press flowers to preserve them and make their very own wildflower bombs to grow Florida natives at home!

**REGISTER NOW**



If your child is only available for one or two days, Day Passes are now available so you can register for individual days of our Nature Wonderland Camp running this week. Campers will make snow, solve winter nature mysteries and more!



**CAMP TIMES:****8:00 AM - 3:00 PM**

Drop off: 8:00 – 8:30 AM

Pick up: 2:30 – 3:00 PM

Location: 4111-A Henderson Blvd. in South Tampa

**PURCHASE A CAMP DAY PASS**

**MLK DAY  
NATURE CAMP**

**JANUARY 15**

- K - Gr 5
- 8:30am - 2:30pm
- Explore Nature
- Bug Hunt
- Animal Encounters
- Yoga
- Butterfly Release  
(weather permitting)

**HONORING HIS LEGACY FOR  
ENVIRONMENTAL JUSTICE**

**BUTTERFLYTAMPA.COM**

Register Kindergarten to Grade 5 kids for our one-day MLK Jr. camp during the upcoming non-student day: January 15. Children will learn about MLK Jr.'s legacy for environmental justice. Space is filling up quickly so register now!

**MLK DAY CAMP: January 15****Time: 8:00 AM - 3:00 PM**

Drop off: 8:00 – 8:30 AM

Pick up: 2:30 – 3:00 PM

Location: 4111-A Henderson Blvd. in South Tampa

[REGISTER MY CAMPER](#)

## NATURE CAMPS ALL YEAR ROUND!



Did you know we offer Nature Day Camps on most non-student days and every winter/spring/summer/fall break throughout the school year? Don't miss out on registering for camp so visit the Kids' Corner of our website often for information about upcoming camps and open registration dates. All camps are held at the Tampa Bay Butterfly Foundation Gallery located at 4111-A Henderson Blvd. in South Tampa, right beside Little Red Wagon Native Nursery.

### CAMP TIMES:

**8:00 AM - 3:00 PM**

Drop off: 8:00 – 8:30 AM



Pick up: 2:30 – 3:00 PM

Location: 4111-A Henderson Blvd. in South Tampa

Visit Kids' Corner @ [BUTTERFLYTAMPA.COM](https://butterflytampa.com)



On your next nature walk grab some colored crayons and paper and head out to take some tree rubbings. You will be astonished by the variety of patterns that come from different barks. Knots in trees make great huge eyes!





# FINGER PUPPETS



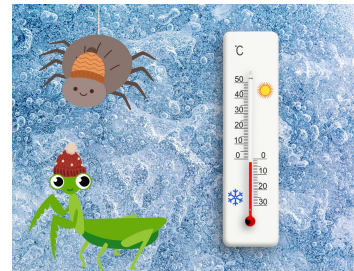
## ANIMAL FINGER PUPPETS

With a soft printed fabric design, the realistic detailing of these finger puppets will surely pollinate the imagination of kids!

**SHOP NOW**

## WACKY FACT!

To survive the cold of winter months, many insects replace their body water with a chemical called glycerol, which acts as an "antifreeze" against the temperatures.



## "Diggin' in to Restore Butterfly Habitat in Tampa Bay"

Tampa Bay Butterfly Foundation regularly has a number of single-day and ongoing monthly volunteering opportunities.



### Butterfly Alley Maintenance

Volunteers are needed to perform cleanup and maintenance of Butterfly Alley habitat (4110 W. Estrella St., behind Little Red Wagon Native Nursery). We will not be performing maintenance this month but hope you will join us in the future.

**VOLUNTEER: January 19**

**CENTER FOR CONSERVATION****CFC Habitat Maintenance**

The Florida Aquarium, Tampa Bay Butterfly Foundation and FWC's Suncoast Youth Conservation Center need volunteers to assist with habitat maintenance at Center for Conservation site of the Florida Conservation and Technology Center in Apollo Beach (529 Estuary Shore Lane) as well as their Adopt a Road site along Dickman Road.

**VOLUNTEER: TBD**

**ENCORE PARK****Encore Park! Maintenance**

Volunteers will be helping to maintain a Tampa Bay Butterfly Foundation-sponsored butterfly garden at Encore Park located at 1210 E. Harrison St. (Corner of Harrison St. and Hank Ballard St.).

**VOLUNTEER: January 12**

**Nature Camp Volunteers**

Sign up for a rewarding experience mentoring Kindergarten to Grade 5 children during our Nature Camps in January. Click the button below to select the date(s) you are available to volunteer. This is a great opportunity for High School students to earn hours for the Florida Bright Futures Scholarship program and college environmental science students.

**VOLUNTEER: Winter Break Camps**

**Little Red Wagon Native Nursery**

We currently need garden enthusiasts to help us support the efforts of Tampa Bay Butterfly Foundation's conservation, restoration, research, and education efforts.

**VOLUNTEER - 2024**

**ABOUT THE TAMPA BAY BUTTERFLY FOUNDATION:**

With a focus on Florida butterfly species and native plants, environmental education and local awareness in the Tampa Bay area, Tampa Bay Butterfly Foundation was established to support the conservation of

butterflies and pollinators and the restoration of their natural wildlife habitats. By working globally with university research partners, providing educational and research opportunities and community outreach programs, and through multi-faceted fundraising efforts, the Foundation aims to elevate public awareness of the importance of butterflies.

The Tampa Bay Butterfly Foundation Inc., a 501(c)(3), is an affiliate of the Butterfly Conservatory of Tampa Bay.

## Education Exhibit



Visit our butterfly education exhibit inside Little Red Wagon Native Nursery during our normal business hours. Enjoy seeing live butterflies, their caterpillars and chrysalis as well as a few native reptiles every day of the week!

While the education exhibit is currently free, we do accept donations for Tampa Bay Butterfly Foundation for education, research, habitat restoration and conservation for butterflies and native plants in our area.

[BUTTERFLYTAMPA.COM](http://BUTTERFLYTAMPA.COM)

## Monthly Calendar of Events

- JANUARY 1** Happy New Year!
- JANUARY 5** National Bird Day
- JANUARY 6** Apple Tree Day--we sell Gopher Apple!
- JANUARY 8** Earth's Rotation Day
- JANUARY 10** National Houseplant Appreciation Day
- JANUARY 12** National Youth Day
- JANUARY 15** MLK Day
- JANUARY 16** Intl Hot and Spicy Food Day -- Grow some native bird pepper plants!
- JANUARY 18** Get to Know Your Customer Day
- JANUARY 19** Florida Arbor Day
- JANUARY 20** National Use Your Gift Card Day--come see what's new in our Gift Shop!
- JANUARY 20** Volunteer Appreciation Brunch
- JANUARY 21** National Squirrel Day
- JANUARY 25** National Florida Day
- JANUARY 27** National Seed Swap Day--visit our seed swap library
- JANUARY 29** National Puzzle Day

Little Red Wagon Native Nursery is Tampa's only native nursery. Supporting Florida's native plant & wildlife ecosystem and our natural world, we are located at 4113 Henderson Blvd. in South Tampa.

You can also visit us at [LittleRedWagonNativeNursery.com](http://LittleRedWagonNativeNursery.com)

Email: [Info@ButterflyTampa.com](mailto:Info@ButterflyTampa.com)

Hours: Mondays: 11-3, Tuesdays - Fridays 11-5:30, Saturdays 10-5:30, Sundays 12-4

[Visit Little Red Wagon Native Nursery](#)

This email was sent to [volunteer@butterflytampa.com](mailto:volunteer@butterflytampa.com) because you've subscribed on our site or made a purchase.  
[Unsubscribe](#) | [Edit preferences](#)



 **omnisend**