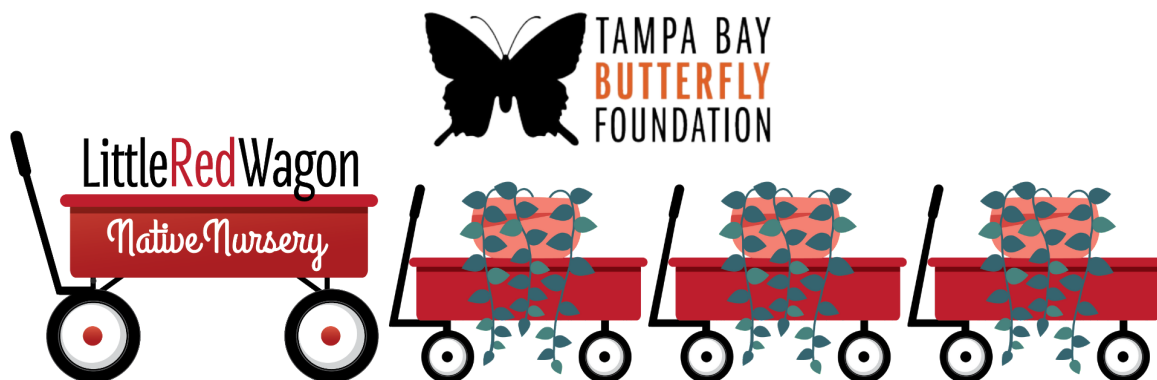


If you cannot see images, please [click here](#)

LITTLE RED WAGONFUL

Nurturing Nature One Wagon at a Time



July 2023

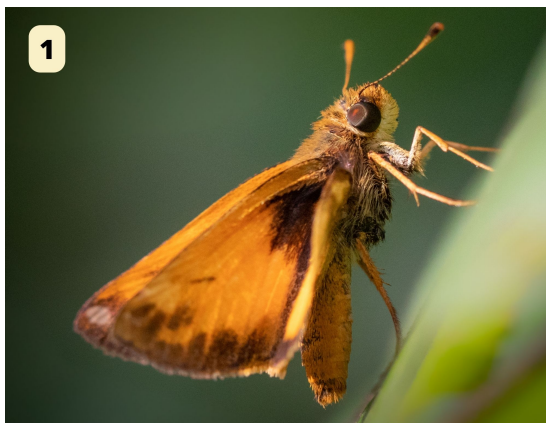
If the first of July be rainy weather,
It will rain, more or less, for four weeks together.
~English proverb

July is the hottest month of the year, it's considered Family Reunion Month and it begins with a bang as we celebrate Independence Day. In preparation for your 4th of July celebration, stop by our Gift Shop to pick up garden pots and garden flags in patriotic designs to help commemorate the day. Make a bold statement in your outdoor space this year. Little Red Wagon Native Nursery will be open July 4th. If we could just get some rain! We are certainly ready for it here at Little Red Wagon.

Butterfly of the Month

Fiery Skipper

Fiery Skippers are tiny and fast: with a wingspan of only 1 ¼ to 1 ½ inches, these skippers dart from flower to flower, oftentimes making definitive identification difficult. But, when they do pose for a long enough, you easily see the small brownish-black spots on the side underwings. While not as big as chocolate chips, we refer to these spots as chocolate chips in the field to help us remember the identification of this small skipper.



Male Fiery Skippers tend to be bright orange (see Photo #1) while females tend to be a duller beige or light brown. (See Photo #2.) Markings on the upper wings of male and females are also distinctively different, making it easy to distinguish between the two. (See Photo #3.)



Females lay single, shiny pale green to turquoise eggs on host plants; these include the native St. Augustinegrass (*Stenotaphrum secundatum*) and the exotic Bermudagrass (*Cynodon dactylon*). Caterpillars are usually brown with a dark stripe running down its back and tiny dark spots. Its head is shiny and black with two short and faint stripes on its upper face. (Note: If you're able to incorporate St. Augustinegrass into your landscape, please avoid using pesticides and mow as infrequently as possible to help ensure the health of the caterpillars.)

Fiery Skippers produce at least three generations per year are commonly found in weedy areas, pollinator gardens, lawns, and many of Florida's native habitats as long as there's sun, grass, and nectar-rich flowers. Please let us know if you see any here in Hillsborough or Pinellas County. Email your photos to info@ButterflyTampa.com. We'd love to see what you find!

Host Plant Of The Month



Dill (*Anethum graveolens*)

One of my favorite summer herbs is Dill (*Anethum graveolens*). Not only is it an ingredient used in many great summertime recipes (think grilled salmon, potato salad, or a side dish of artichokes), but this graceful plant is also a caterpillar food source for Black Swallowtails.

The annual is striking. It has lacy leaves and delicate, 3-inch-wide clusters of yellow flowers that look like miniature umbrellas. The plant can reach a height of almost 2 feet and does best in full sun and well-drained soil. Harvest the flower heads just before the seeds begin to ripen to make your own pickles, or to save for future plantings. Not only will this ensure the Dill doesn't self-sow, but it will ensure you have enough Dill to feed a lot of hungry Black Swallowtail caterpillars!

SHOP NOW

Garden Swag

Get Your SwagON!



WE'RE BUZZING WITH EXCITEMENT!

We are now selling local honey from Tampa Bees. Did you know eating local honey can help reduce allergies? What a sweet benefit! Stop by our gift shop to find out what all the buzz is about! Choose from Wildflower and Orange Blossom flavors in a variety of sizes.

SHOP NOW: Wildflower

SHOP NOW: Orange Blossom



Be prepared to welcome guests for your 4th of July celebration with this patriotic garden flag. To help with your celebrations, enjoy 10% off our 15-18" Stars and Stripes planters. And don't forget the organic repellent, No Mosquitoz, while you're watching the fireworks! We'll be open from 11:00 am to 5:30 pm. Please join us for a glass of champagne and enjoy 10% off purchases \$50 and up while you shop for plants and gift shop merchandise on July 4th! Have a safe and Happy Independence Day!

SHOP NOW

*10% off \$50 cannot be combined with other offers.

Nectar Plant of the Month



Blue Sage (*Salvia azurea*)

Blue Sage (*Salvia azurea*) is an herbaceous, clump-forming perennial in the mint family. Growing up to 5 feet tall and 2 to 4 feet wide, this plant is a true show-stopper: its royal blue (rarely off white) two-lipped flowers whorl around the plant's stem and form spike-like clusters, inviting pollinators galore and the occasional hummingbird to stop and nectar. With a bloom season that starts in late spring and lasts until late fall, this plant deserves a special place in every garden. Simply deadhead spent blooms and cut the plant by 1/2 after its first flowering finishes to encourage full three-season color in a more compact form.

Blue Sage is native to flatwoods and sandhills from North Carolina south to Florida and west to Nebraska, Minnesota and Texas. For best results, plant Blue Sage in full sun or partial shade in sandy or shallow-rocky soil. Although it prefers moist soil, Blue Sage can tolerate occasional drought once established.

Blue Sage is a show-stopper that can stand on its own in formal settings. It also adds vibrancy to mixed wildflower gardens and can be paired with any of our tall native grasses like Bluestem (*Andropogon spp.*) Why not stop by our nursery and talk to one of our specialists to see where it will look best in your garden?

[SHOP NOW](#)

Design With Grasses



Muhly Grass (*Muhlenbergia capillaris*)

Muhly Grass (*Muhlenbergia capillaris*) is a long-lived, clump-forming perennial grass that grows 2 to 4 feet tall and 2 to 3 feet wide. With its masses of delicate, airy plumes of pinkish purple flowers and seed heads that can easily add another 2 feet to the plant's height, Muhly Grass adds dramatic interest to the fall landscape. It works equally well in mass plantings and in designs with any of our native Blazing Stars (*Liatris spp.*), Ironweeds (*Vernonia spp.*), or Asters (*Symphyotrichum spp.*). Muhly Grass can also be grown in containers that are at least 12 inches deep (required for proper root establishment).

Native to prairies, pine barrens, flatwoods and open woodlands from Massachusetts south to Florida and west to Kansas and Texas, Muhly Grass tolerates heat, humidity, drought, and poor soil. It is also moderately tolerant of salt wind and salt spray. This low-maintenance plant can be grown throughout Florida and performs best in full sun and well-drained soils. Simply water new plants until established. Cutting established plants back to 3 inches above the ground just before spring flush encourages more vibrant, longer-lasting pink plumes.

In addition to its aesthetic qualities, Muhly Grass helps our native animals. Small birds eat the seeds and the plant's low canopy provides shelter and refuge to birds and small mammals. With all these great things going for the plant, why not add it to your garden?.

(Fun fact: From North Carolina State Extension: "The genus, *Muhlenbergia*, was named after Gotthilf Muhlenberg, a botanist, chemist, and mineralogist. He is credited with classifying and naming at least 150

species of plants in his *Index Flora Lancastriensis*, published in 1785. The specific epithet, *capillaris*, means fine or hair-like.”)

[SHOP NOW](#)

KIDS' CORNER



K-Grade 5 **NATURE**
SUMMER CAMP
FUN CONTINUES...

2022 GUIDE TO FLORIDA WINNER
BEST OF FLORIDA
BEST SUMMER CAMPS
GUIDETOFLORIDA.COM

8 am - 3 pm
4111-A Henderson Blvd., Tampa, FL 33629

Join us July and August for adventures discovering nature. Lots of interesting wildlife ambassadors will be visiting our camps for an up close and hands-on experience with some amazing critters! Register one month in advance of a camp session to get \$25 off the registration fee. Our camps are super popular so Day Passes will only be made available, on the Friday prior, if camps are not full. You won't want to miss out on the different themes for our nature camps this summer! Every camper will have the opportunity to release a butterfly by the end of the camp week.

[REGISTER NOW](#)



LittleRedWagon
NativeNursery

NATURE SCAVENGER HUNT

SEE HOW MANY OF THESE CAN YOU FIND!

 Acorns <input type="checkbox"/>	 Flying insect <input type="checkbox"/>	 Tree stump <input type="checkbox"/>	 Spider web <input type="checkbox"/>
 Squirrel <input type="checkbox"/>	 Moss on a tree <input type="checkbox"/>	 4 types of birds <input type="checkbox"/>	 3 types of leaves <input type="checkbox"/>
 A rock big enough to stand on <input type="checkbox"/>	 Pine cone <input type="checkbox"/>	 Red flower <input type="checkbox"/>	 Tree bark that is not brown <input type="checkbox"/>
 Animal tracks <input type="checkbox"/>	 A path in the woods <input type="checkbox"/>	 An animal making noise <input type="checkbox"/>	 Something you didn't expect to see <input type="checkbox"/>

[DOWNLOAD PDF](#)


SNAKE BRACELETS

Check out these new snake bracelets!

July 16 is World Snake Day. Trick your friends and family into thinking you have a real snake on your wrist! Be sure to wear it to our Slithering Snakes camp this month!

[SHOP NOW](#)

WACKY FACT!

Stink Bugs are stinky! Stink bugs (aka Assassin Bugs) are great predators for other bugs you can find in your backyard. However, if they are killed they will release an awful smell.



“Diggin’ in to Restore Butterfly Habitat in Tampa Bay”

Tampa Bay Butterfly Foundation regularly has a number of single-day and ongoing volunteering opportunities.



We are taking July off from our monthly maintenance projects for our annual national butterfly count month with NABA. We will be counting butterflies in teams throughout the state this month for NABA's butterfly population monitoring. Watch for dates in August as we resume the maintenance and we will need volunteers for sure by then!



2023 Nature Camp Assistants

We need adults and/or high school students to help with Kids' Summer Nature Camps from 7:45 am to 3:30 pm. A commitment for the full camp session is preferred. All Nature Camps will be held at 4111-A Henderson Blvd. in South Tampa.

VOLUNTEER: July - August



Little Red Wagon Native Nursery

We currently need garden enthusiasts to help us support the efforts of Tampa Bay Butterfly Foundation's conservation, restoration, research, and education efforts.

VOLUNTEER

ABOUT THE TAMPA BAY BUTTERFLY FOUNDATION:

With a focus on Florida butterfly species and native plants, environmental education and local awareness in the Tampa Bay area, Tampa Bay Butterfly Foundation was established to support the conservation of butterflies and pollinators and the restoration of their natural wildlife habitats. By working globally with

university research partners, providing educational and research opportunities and community outreach programs, and through multi-faceted fundraising efforts, the Foundation aims to elevate public awareness of the importance of butterflies.

The Tampa Bay Butterfly Foundation Inc., a 501(c)(3), is an affiliate of the Butterfly Conservatory of Tampa Bay.

Education Exhibit



Visit our butterfly education exhibit inside Little Red Wagon Native Nursery during our normal business hours. Enjoy seeing live butterflies, their caterpillars and chrysalis as well as a few native reptiles Tuesdays through Sundays.

While the education exhibit is currently free, we do accept donations for Tampa Bay Butterfly Foundation for education, research, habitat restoration and conservation for butterflies and native plants in our area.

[BUTTERFLYTAMPA.COM](https://butterflytampa.com)

Monthly Calendar of Events

JULY 3 International Plastic Bag-free day
 JULY 4 Independence Day -- LRW will be open 11-5:30!
 JULY 6 World Fire Fly Day
 JULY 7 National Koi Fish Day
 JULY 16 World Snake Day
 JULY 17-25 National Moth Week
 JULY 28 World Nature Conservation Day

[Visit Little Red Wagon Native Nursery](#)

Little Red Wagon Native Nursery is Hillsborough County's only native nursery. Supporting Florida's native plant & wildlife ecosystem and our natural world, we are located at 4113 Henderson Blvd. in South Tampa.

You can also visit us at LittleRedWagonNativeNursery.com

Email: Info@ButterflyTampa.com

SUMMER Hours: Mondays: 11-3, Tuesdays - Fridays 11-5:30, Saturdays 10-5:30, Sundays 12-4

Regular Hours: Tuesdays - Fridays 11-5:30, Saturdays 10-5:30 and Sundays 12-4. Closed Mondays.

This email was sent to [[contact.email]] because you've subscribed on our site or made a purchase.
[Unsubscribe](#) | [Edit preferences](#)



