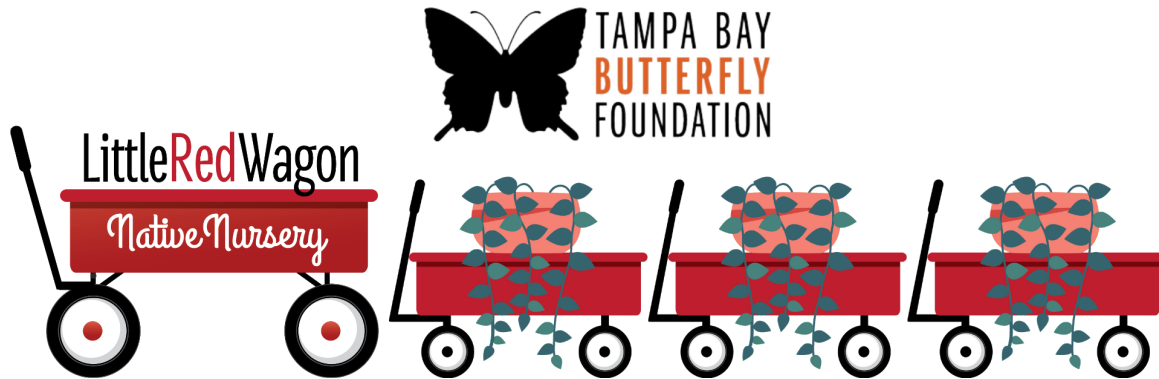


If you cannot see images, please [click here](#)

LITTLE RED WAGONFUL

Nurturing Nature One Wagon at a Time



November 2022

“Every leaf speaks bliss to me, fluttering from the autumn tree.” ~Emily Bronte

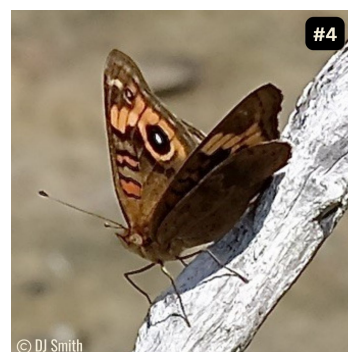
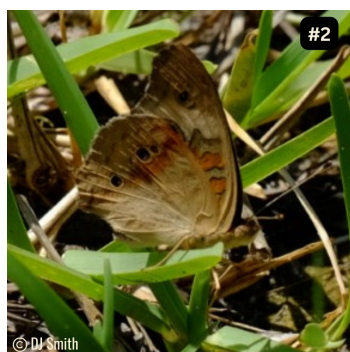
Thanksgiving is a time to gather with family, friends and all the special people in our lives to give thanks for the many blessings we have. May this harvest season be filled with laughter and joy with thankful hearts for all life has to offer. Stop by Little Red Wagon Native Nursery to pick up a plant or something unique from our Gift Shop, for a hostess gift or to get a head start on holiday shopping. Gift cards are always in stock.

Butterfly of the Month



COMMON BUCKEYE

Buckeyes are stunning, medium-sized beauties (wingspan typically 1 ½ - 2 ¾ inches) that, are easily recognized by new butterfliars: their wings have conspicuous eyespots (two on the forewing and two on the hindwing), which are thought to help protect the butterfly from predators. (See Photo #1.)



The bottom of the hindwing is usually tan in the summer and rose-red in the fall. (See Photos #2 and #3.) In our area, there is only one other similar-looking butterfly. It's the Common Buckeye's close cousin, the Mangrove Buckeye. They can be distinguished by the band that surrounds the large eyespot on the upper forewing: Common Buckeyes have a cream or white band; Mangrove Buckeyes have an orange band. (See Photo #4.) Although less scientific, Common Buckeyes tend to be much more wary of strangers than

Mangrove Buckeyes and will fly away when people approach; Mangrove Buckeyes tend to be more curious. Indeed, I was on a recent butterfly count and, in a really special encounter, multiple Mangrove Buckeyes swarmed one of our participants for about 15 seconds.

Females lay ribbed, slightly stubby green eggs singly on host plants in the Acanthus, Broomrape, and Plantain families. Some of these plants include Swamp Twinflower (*Dyschoriste humistrata*), Oblongleaf Twinflower (*D. oblongifolia*), Frogfruit (*Phyla nodiflora*), Beach False Foxglove (*Agalinis fasciculata*), and Blacksenia (*Seymeria spp.*). Caterpillars are black with white stripes and numerous blue-black spines along its top and ones that are on its bottom sides. Here in Florida, there are at least three generations each year.

Common Buckeyes can be found year round in all counties in Florida. Adults are generalists that can be found along roadsides, in sunny disturbed sites, and in gardens, parks, and wildlife preserves. In the spring, some will fly north, sometimes reaching Canada. They do not tolerate freezing temperatures and migrate into Florida by the millions at the end of each summer and early fall.

We've recently seen these winged beauties at Fort De Soto and at the Duette Wilderness Preserve. How about you? Reach out to us on [Facebook](#) and let us know where you're seeing them.

Host Plant Of The Month



© ButterflyTampa.com

Frogfruit - *Phyla nodiflora*

Frogfruit (*Phyla nodiflora*) is a charming groundcover with trailing foliage that grows to about 6 inches high. A member of the verbenaceae family, Frogfruit's white and reddish-pink flowers look like miniature versions of its larger verbenaceae cousins. The plant is listed as semi-evergreen: it will go dormant in harsh winters, but re-emerges with warmer temperatures. In our area, the plant will typically bloom from early spring through the fall with peak bloom occurring in May and fruit setting in October.

Frogfruit is native to much of the United States. It can be found as far north as Pennsylvania and Oregon and as far south as Florida and Texas and is naturally found in moist and wet habitats with well-drained to poorly drained sandy, limestone, clay or loam soils. In Florida, Frogfruit can be found along roadsides, hydric bogs, and exposed limestone. It tolerates mowing and makes a great turf alternative.

Frogfruit is the caterpillar host plant for Buckeyes, Phaon Crescents, and White Peacocks and a nectar source for Barred Yellows, Cerulean Blues, Gray Hairstreaks, Phaon Crescents, Checkered Skippers and numerous species of bees.

There are many uses for this plant in your landscape. This ground cover has been used by numerous customers as a lawn replacement for partial sun to full sun areas. It performs well in hell strip areas between sidewalks and roads. It also makes a nice spiller plant draping over the sides of potted plants or make a nice hanging plant. Keep in mind this plant does not typically survive in mostly shady to full shade conditions. Why not try planting it with *Bidens alba* for a combination that is sure to attract the pollinators?

[Shop now](#)

Garden Swag



SwagON

Whether it's Friendsgiving or a family gathering, being invited to someone's house comes with the thought of a thank you gift for the host/hostess. It's a nice gesture to show appreciation for all the host/hostess have done to prepare delicious food and entertain you. Choosing the right gift can be difficult but don't worry, we have many items available in our Gift Shop to help you select the perfect gift to show your appreciation this Thanksgiving (or any occasion). We sell beautiful nature-themed note cards too! And, if you're stumped, select a gift card and let them choose.

[SHOP NOW](#)

Nectar Plant of the Month



Swamp Twinflower - *Dyschoriste humistrata*

Swamp Twinflower (*Dyschoriste humistrata*) is a lovely, deciduous short-lived perennial that grows to 6 inches tall and up to 8 feet wide. The plant's tiny, trumpet-shaped lavender flowers bloom most prolifically in the spring, with fewer flowers produced in the summer and fall.

Native to the shaded edges of hydric hammocks and wetland swamp forests in the Atlantic and Gulf Coastal Plain, Swamp Twinflower has been [vouchered](#) in peninsular Florida from the Georgia border south to Sarasota and De Soto Counties. It is a great nectar source for White Peacocks and leafcutter, bumble, and honey bees. It is also the larval host for Common Buckeyes, whose caterpillars eat its leaves and flowers.

Swamp Twinflower prefers acidic to neutral loamy or sandy soils. Although Swamp Twinflower can be grown in sunny areas if watered regularly, Swamp Twinflower performs best in shady, well-drained soils. It is a great turf alternative and can be paired with Frogfruit (*Phyla nodiflora*), and Sunshine Mimosa (*Mimosa strigillosa*) for an attractive, low-maintenance groundcover. Mowing Swamp Twinflower during its winter dormancy to a height of 3 inches will rejuvenate the plant and produce more spring blooms. This is another plant that does well in pots as a spiller plant.

[Fun Fact: Twinflowers' flowers are paired, hence its common name.]

[SHOP NOW](#)

Design With Vines



© Sharon LaPlante

Saw Greenbrier - *Smilax bona-nox*

Saw Greenbrier (*Smilax bona-nox*) is a semi-evergreen prickly vine that spreads easily and can climb to heights of 20 feet. Its inconspicuous spring flowers produce clusters of grape-like black or blue berries in the fall. These berries are a valuable fall and winter food source for wood ducks, ruffed grouse, wild turkeys, songbirds, and small mammals. (Note: Saw Greenbrier is not self-fertile; consequently, male and female plants must be near each other to set fruit.)

Humans can also consume Saw Greenbrier's berries and other parts of the plant. Choctaw and Houma ground dried roots into flour for bread making and Houma used root decoctions for urinary disturbances. (For additional recorded uses, please see the [Native American Ethnobotany Database](#).)

Saw Greenbrier is found from Delaware west to Kansas, and south to Florida and Texas. It tolerates full sun to deep shade and can be found in well-drained to wet areas in woods, floodplain forests, fields, and hedgerows. It is resistant to both drought and humidity. However, Saw Greenbrier forms dense tangles that provide cover for wildlife and naturally deter trespassers but this feature means it's not an appropriate plant for every garden. How about yours?

[Fun Fact: This species' Latin name, *bona-nox* translates as good night. From the [University of Washington](#), we learned that this species was named by Linnaeus and that "in his time *bona-nox* would

have served as a euphemistic Latin curse (the way someone might say dadgummit, goldarnit, or flipping heck), possibly uttered after getting ensnared in this viny plant's thorns.”]

KIDS' CORNER



One more day left! You still have time to keep the kids entertained with our Thankful for Nature camp during school break this month. With a special emphasis on bugs, children will learn why we should be grateful for nature, will get the opportunity to meet our animal ambassadors, and will release butterflies (weather permitting). Daily drop-in rates available!

[REGISTER: THANKFUL FOR NATURE CAMP](https://butterflytampa.com)



REGISTER: January 2-6



REGISTER: January 16



Do you need a fun craft to do this weekend? Go pick out some leaves and paint your favorite bugs on them!



Fall is the best time to plant! The weather is cool enough and plants have all winter to establish! Get some kids gloves and get ready to have fun in the dirt!



Our Thankful for Nature Fall camp will be held this month and we need you! Sign up to volunteer and you may be surprised what you might learn. Along with having fun with the kids, you will participate in learning activities, crafts and fun bug games! High School students are eligible to receive service hours toward Bright Futures scholarships. Nature day camps will be held at the Tampa Bay Butterfly Foundation Gallery (4111-A Henderson Blvd.) in South Tampa. Please click the button below to sign up!

VOLUNTEER

“Diggin’ in to Restore Butterfly Habitat in Tampa Bay”

Tampa Bay Butterfly Foundation regularly has a number of single-day and ongoing volunteering opportunities.





Volunteer events and activities are subject to change due to weather.



Nature Camp Assistants: **Fall & Winter 7:45 am - 3:15 pm**

We need adults and/or high school students to help with our fall Thankful for Nature Kids' camp November 21-23 and upcoming Nature Kids' camps in 2023.

To volunteer for Thankful for Nature Camp click or copy and paste into a browser: <https://volunteersignup.org/ARX4F>

To volunteer for 2023 Camps, click or copy and paste into a browser: <https://volunteersignup.org/9FXAF>

VOLUNTEER - Fall Camp

VOLUNTEER - 2023 Camps



CFC Habitat Maintenance: **Nov. 17 @ 9:00 – 11:00 am**

The Florida Aquarium, Tampa Bay Butterfly Foundation and FWC's Suncoast Youth Conservation Center need volunteers to assist with habitat maintenance at Center for Conservation site of the Florida Conservation and Technology Center in Apollo Beach (529 Estuary Shore Lane) as well as their Adopt a Road site along Dickman Road.

To volunteer, click or copy and paste into a browser: <https://volunteersignup.org/X4TEW>

VOLUNTEER



Little Red Wagon Native Nursery:

We currently need garden enthusiasts to help us support the efforts of Tampa Bay Butterfly Foundation's conservation, restoration, research, and education efforts. To join our awesome volunteer team, click or copy and paste into a browser:

<https://volunteersignup.org/9BQTJ>

[VOLUNTEER](#)**ABOUT THE TAMPA BAY BUTTERFLY FOUNDATION:**

With a focus on Florida butterfly species and native plants, environmental education and local awareness in the Tampa Bay area, Tampa Bay Butterfly Foundation was established to support the conservation of butterflies and pollinators and the restoration of their natural wildlife habitats. By working globally with university research partners, providing educational and research opportunities and community outreach programs, and through multi-faceted fundraising efforts, the Foundation aims to elevate public awareness of the importance of butterflies.

The Tampa Bay Butterfly Foundation Inc., a 501(c)(3), is an affiliate of the Butterfly Conservatory of Tampa Bay.

Pardon Our Metamorphosis



Visit our temporary butterfly education exhibit inside Little Red Wagon Native Nursery during our normal business hours while the Butterfly Conservatory is in permitting to be built. Enjoy live butterflies, their caterpillars and chrysalis as well as a few native reptiles Tuesdays through Sundays. While the education exhibit is currently free, we do accept donations for Tampa Bay Butterfly Foundation for education, research, habitat restoration and conservation for butterflies and native plants in our area. Please keep visiting our website for updates regarding our Grand Opening.

www.ButterflyTampa.com

Monthly Calendar of Events

November 15: *National Recycling Day*

November 19: *National Camp Day--[Register for Thankful for Nature Kids' Camp](#)*

November 24: *Happy Thanksgiving! LRW will be closed.*



We are thankful for customers like you who support our small business by shopping local. Little Red Wagon Native Nursery will be closed on Thanksgiving so our staff can spend time with family. We will resume normal business hours on Friday, November 25. Best wishes for a Happy Thanksgiving.

November 25: Green Friday--LRW will be open!



Shop local on Green Friday for 10% off all plants and gift shop items! Proceeds from sales support butterfly conservation.

November 26: *Small Business Saturday--support our local business!*

November 29: *Giving Tuesday--[DONATE](#) to Tampa Bay Butterfly Foundation*



Giving Tuesday is a global generosity movement held each year on the Tuesday following Thanksgiving. Everyone can contribute toward building the better world we all want to live in. Make our hearts flutter with a contribution toward butterfly conservation, habitat restoration and public awareness by making a tax-deductible gift to Tampa Bay Butterfly Foundation. You don't have to wait until #GivingTuesday, why not donate now?

[DONATE](#)

[Visit Little Red Wagon Native Nursery](#)

Little Red Wagon Native Nursery is Hillsborough County's only native nursery. Supporting Florida's native plant & wildlife ecosystem and our natural world, we are located at 4113 Henderson Blvd. in South Tampa.

You can also visit us at [LittleRedWagonNativeNursery.com](https://www.LittleRedWagonNativeNursery.com)

Email: Info@ButterflyTampa.com

Hours: Tuesdays - Fridays 11-5:30, Saturdays 10-5:30 and Sundays 12-4. Closed Mondays.

This email was sent to [\[\[contact.email\]\]](#) because you've subscribed on our site or made a purchase.
[Unsubscribe](#) | [Edit preferences](#)



 **omnisend**