

If you cannot see images, please [click here](#)

Little Red Wagonful

Nurturing Nature One Wagon at a Time

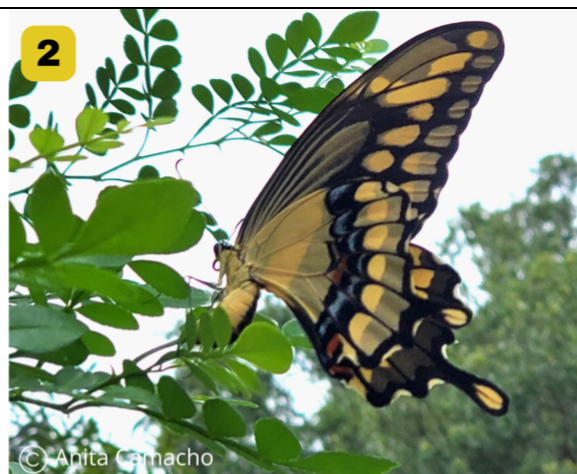


June 2022

"It's not just about having green thumbs or being able to identify plants; gardening is also about understanding how they interact with their environment" ~ Michelle Obama

June are celebrating national pollinator week with lots of events, hopefully you received that email a few days ago! If not, look for pollinator power and speaking events on our website at ButterflyTampa.com to register. We also have national gardening week and honoring dads on Father's Day. Pick up a native plant and garden accessories for the garden-loving dad, or for yourself to make your time nurturing nature even more enjoyable.

Butterfly of the Month



Giant Swallowtail

In anticipation of World Swallowtail Day on June 12th, it's fitting that our butterfly of the month is the Giant Swallowtail. With a wingspan that can exceed 6 inches, the Giant Swallowtail is the largest butterfly native to Florida and one of the largest in the United States.

The butterfly has beautiful coloration and is distinct from all other butterflies that fly in our area. Its top wings are a deep chocolate brown or black, with a pale cream band that runs horizontally across the top third of the wings and another yellow band that parallels the bottom edges. The two bands intersect to form an "X" near the tip of the top wings. Usually, there's also a yellow spot in the tail. (See Photo #1.)

The bottom wings of the Giant Swallowtail are radically different. They are a pale cream with pronounced black venation and a blue median band that runs along the middle of the bottom wing. About halfway down this band, there's also a small brick-red patch. (See Photo #2.)

Giant Swallowtails females lay orange to yellow colored eggs (See Photo #3) on very young leaves of host plants in the Citrus family. Some of these native to our area include Common Hoptree (*Ptelea trifoliata*), Hercules-club (*Zanthoxylum clava-herculis*), and Wild-lime (*Zanthoxylum fagara*). Giant Swallowtails will also lay eggs on non-native edibles that include Orange, Lemon, and Tangerine trees (*Citrus spp.*), and Rue (*Ruta graveolens*). When the female Giant swallowtails are ovipositing the eggs, they never stop fluttering or actually land. This butterfly is a very strong flyer. The caterpillars that emerge are brown with a white and yellow patch. More mature caterpillars can be 2.5" long and are frequently described as looking like bird droppings: they are a mottled brown with a whitish patch that resembles a saddle. (See Photo #4.) There are at least three generations of Giant Swallowtails in Florida and caterpillars are most typically seen from February through early November.

Giant Swallowtails are found throughout Florida in open woods, scrubs, and gardens. They glide effortlessly through the air – appearing to float – when they don't feel threatened and are easily approached while nectaring on lantana, azalea, swamp milkweed, and firebush. We regularly see them at Felts Audubon Preserve in Palmetto, Little Red Wagon Native Nursery, my house, and, according to iNaturalist postings, people saw them at Sulphur Springs Park in Tampa during May. How about you? Let us know where you're seeing them by reaching out to us on Facebook.

Host Plants Of The Month

This month, we're featuring three host plants for Giant Swallowtail caterpillars: Wild Lime (*Zanthoxylum fagara*), Hercules' Club (*Zanthoxylum clava-herculis*), and Rue (*Ruta graveolens*).

Wild Lime

Wild Lime is an evergreen small understory tree, native to hammocks, scrubs, and coastal dunes from Marion county south to the Keys. Growing to 20' tall and 10' wide, Wild Lime can be maintained as an individual specimen, planted in a container, or grouped to form a hedge. With clusters of tiny yellow flowers that resemble pompoms, thorny branches, and dense foliage, these hedges can form a natural and beautiful deterrence to trespassers.



© Cori Campos

In addition to being a food source for Giant Swallowtail caterpillars, birds eat its fruit and humans have used its bark, fruit, and leaves as spices and to make tea. The fruit has also been used as a numbing agent.

Wild Lime gets its common name from the lime-like fragrance its leaves emit when crushed.

[SHOP NOW](#)

Hercules' Club



© Cori Campos

Hercules' Club is a long-lived deciduous tree whose native range extends from the coastal plains of southern Virginia south through much of Florida and west to Texas. Although the tree can grow to 50' tall by 25' wide, it more commonly grows to a height of 25-30'. The tree grows best in full sun of 6 hours or more and prefers well-drained loamy or sandy soil. It is drought tolerant once established.

The bark of Hercules' Club is especially interesting: its coloration is a blotchy mixture of dark and lighter gray with corky wart-like features tipped with thorns. (Sugarberries and hackberries (*Celtis spp.*) have similar corky wart-like features, but lack the thorns.)

Hercules' Club is host to Giant Swallowtail caterpillars and its dense clusters of small white flowers attract butterflies, moths and bees in the spring. Birds and small mammals eat the fruit and enjoy its seeds. In other parts of the country, Hercules Club is called Toothache Tree: Native Americans and early American settlers chewed its leaves and chewed or smoked the tree's bark to relieve pain from toothaches and rheumatism. (You can read more about the traditional medicinal uses of this tree [here](#).)

[SHOP NOW](#)

The botanical names for Wild Lime and Hercules' Club both derive from the Greek words *xanthos* (yellow) and *xylon* (wood); boiling the roots of many *Zanthoxylum* species produces a yellow dye.



© Cori Campos

Rue

Rue is a 2-3' tall and wide woody perennial herb with evergreen, feathery bluish-green leaves and clusters of tiny yellow flowers that bloom in the summer and fall. Rue thrives in poor soils, works well in containers, and is drought-resistant. Plant it in full sun and pair it with White Wild Indigo (*Baptisia alba*) for an interesting combination in your flower garden, or use it as a companion plant for Alpine Strawberries, Figs, and Raspberries. Although native to Europe, this plant is a host plant for both the Giant Swallowtail and the Black Swallowtail.

Rue's leaves are aromatic when crushed, but contact with skin causes photodermatitis in most people. This allergic reaction causes blistering or a rash similar to that caused by poison ivy, so please wear gloves when working with the plant. Additionally, the plant is poisonous to humans: ingestion can cause vomiting, confusion and convulsions, and can be fatal. Please consider these factors before choosing it for your garden.

[SHOP NOW](#)

Garden Swag



Good Stuff Flask or Beer Flight Set

Let the big guy take a much-needed break this Father's Day with a cocktail in the garden. The stoneware flask and beer cups feature original ceramic material with a matte black finish to maintain the perfect temp. And for the amateur sommelier, collect and display your corks in this charming owl cork cage. Holds 80 corks. Add Dad's favorite beverage for thoughtful gift set.

Father's Day - June 19

Dad deserves to be a little self-indulgent on Father's Day. Purchase a gift card to so he can pick up a new pair of garden gloves, a native plant or select from the many unique items available in our Gift Shop. Gift

Cards do not expire so dad can shop at his convenience.

SHOP NOW



Design with Vines



© Cori Campos

Man-in-the-Ground (*Ipomoea microdactyla*)

I still remember the first time I saw Man-in-the-ground (*Ipomoea microdactyla*). It was over in Miami-Dade County, in a recently burned pine rockland. There, amidst charred timbers and sooty soil, was a vine with crimson flowers that were all the more striking against the burnt backdrop.

I learned the plant was the globally imperiled and State of Florida endangered Man-in-the-ground. Endemic to the pine rocklands of south Florida, Man-in-the-ground is one of the first plants to flower after a burn due, in part, to the large, energy-storing underground tubers that give rise to the plant's common name. A member of the Morning-glory family, this plant is a twinning, sprawling and climbing vine with hairless stems that can reach 10' long. Although individual flowers last a single day, the plant is a repeat and constant bloomer, flowering from April through November in its native pine rockland habitat.

Man-in-the-ground is also known as Calcareous Morning-glory and Limestone Morning-glory and performs best in moist, but well-drained, nutrient-poor limestone soils in part shade or full sun. The trumpet-shaped 1" wide flowers provide nectar to hummingbirds, sphinx moths, bees, and skippers.

Pair it with grasses like Bluestems (*Andropogon* spp.) or Muhly Grass (*Muhlenbergia capillaris*) or add a contrasting color with Partridge Pea (*Chamaecrista fasciculata*) in your rock garden for some .

Only about a dozen populations of this plant are known in the wild, so please only source this plant from reputable growers.

\$15.00 / 1 Gallon

SHOP NOW

Nectar Plant of the Month



© Cori Campos

Buttonsage lantana (*Lantana involucrata*)

Buttonsage (*Lantana involucrata*) is a heavily branched, evergreen shrub that grows to 5-10' tall by 5' wide. It can be easily shaped to form an attractive specimen or it can be pruned as a group to form a hedgerow. It has clusters of tiny white to lavender very fragrant flowers that attract a range of butterflies, bees and, occasionally, hummingbirds. Flowers give way to tiny purple fruit that are a favorite of birds.

Notably, Buttonsage leaves smell like sage when they're crushed. According to [one source](#), leaves of the plant were traditionally used in folk medicine to remedy coughing, treat insect bites and break fevers. According to [published research](#), antitumor agents have also been isolated from Buttonsage.

The plant requires full sun and, once established, is drought resistant. A native of our coastal dunes, Buttonsage prefers sandy soils and is especially resistant to hurricane-strength winds. It can also tolerate an occasional storm surge and some exposure to salt wind.

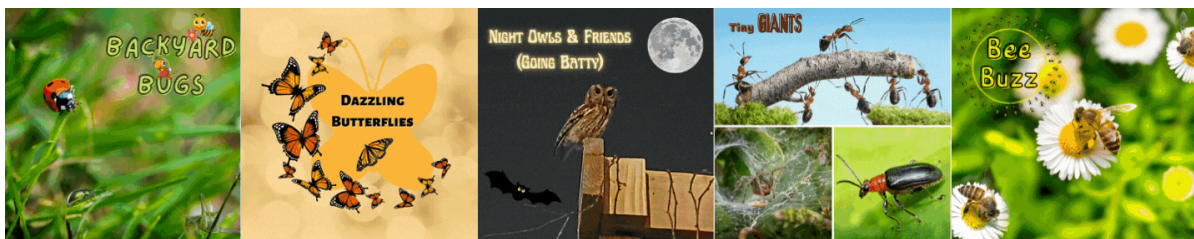
Buttonsage is the only lantana native to our area. Unfortunately, it is less commonly sold than the non-native *Lantana camera*, a [Category I invasive species](#) that can become the dominant understory and is also toxic to livestock.

So, why plant a poor imitation? Plant the original and help #NurtureNative.

\$10.00 / 1 Gallon

SHOP NOW

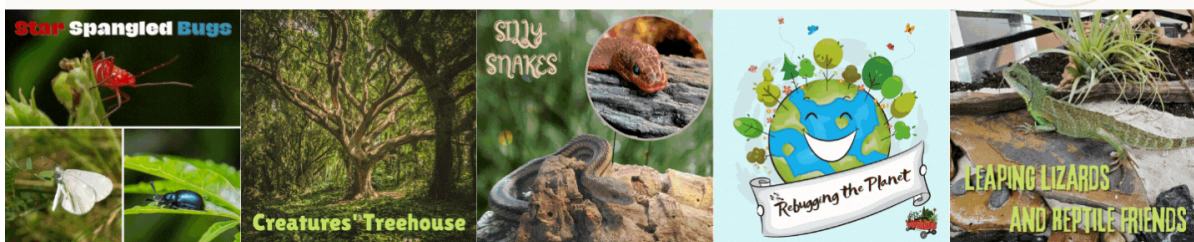
KIDS' CORNER



JUNE - AUGUST 9



REGISTER NOW



Summer Nature Camps

Summer is here! Celebrate the season by learning everything there is to know about Florida's Tiny Giants at our nature camps! Get ready to explore pollinators in space, travel back in time to meet bugs when they were giant, and get up close with a multitude of creatures from Florida's wildlife. Each week is a new fun-filled adventure. Get your spot while they last!

Every child will have the opportunity to release a butterfly the week of camp (weather permitting) and meet our reptile ambassadors. Don't delay--space is limited!

Can't join us for a whole week? Sign up for a single day for only \$60!.

REGISTER NOW

"Diggin' in to Restore Butterfly Habitat in Tampa Bay"

Tampa Bay Butterfly Foundation regularly has a number of single-day and ongoing volunteering opportunities.



UPCOMING VOLUNTEER OPPORTUNITIES:
(All events are subject to change due to weather.)

TBBF Hell Strip Habitat Maintenance: June 20 @ 6:00 - 8:00 pm

Volunteers are needed to perform Hell Strip Habitat maintenance (4110 W. Estrella St.).

To volunteer, click or copy and paste into a browser: <https://volunteersignup.org/JXEFB>

Encore! Technology Park: June 27 @ 6:00 - 8:00 pm

Volunteers are needed to help maintain the Tampa Bay Butterfly Foundation-sponsored butterfly garden at Encore! Park located at 1210 E. Harrison St. (Corner of Harrison Street and Hank Ballard St.)

To volunteer, click or copy and paste into a browser: <https://volunteersignup.org/EKRXM>

CFC Butterfly Garden Maintenance: June 30 @ 9:00 - 11:00 am

The Florida Aquarium, Tampa Bay Butterfly Foundation and FWC's Suncoast Youth Conservation Center are looking for volunteers to assist with habitat maintenance at Center for Conservation site of the Florida Conservation and Technology Center in Apollo Beach (529 Estuary Shore Lane) as well as their Adopt a Road site along Dickman Road.

To volunteer, click or copy and paste into a browser: <https://volunteersignup.org/KJKHJ>

Summer Kids' Camp Assistants: June - August 9, 8:00 am - 1 pm

High School and adult volunteers are needed to assist with our Kids' Nature Camps this summer. A commitment for a full week of camp is preferred; we will have a meeting the week prior to provide information.

To volunteer, click or copy and paste into a browser: <https://volunteersignup.org/BDDPP>



Little Red Wagon Native Nursery:

We currently need garden enthusiasts to help us support the efforts of Tampa Bay Butterfly Foundation's conservation, restoration, research, and education efforts. To join our awesome volunteer team, click or copy and paste into a browser:

<https://volunteersignup.org/9BQTJ>

ABOUT THE TAMPA BAY BUTTERFLY FOUNDATION:

With a focus on Florida butterfly species and native plants, environmental education and local awareness in the Tampa Bay area, Tampa Bay Butterfly Foundation was established to support the conservation of butterflies and pollinators and the restoration of their natural wildlife habitats. By working globally with university research partners, providing educational and research opportunities and community outreach programs, and through multi-faceted fundraising efforts, the Foundation aims to elevate public awareness of the importance of butterflies.

The Tampa Bay Butterfly Foundation Inc., a 501(c)(3), is an affiliate of the Butterfly Conservatory of Tampa Bay.

VOLUNTEER WITH US!





TAMPA BAY BUTTERFLY FOUNDATION **NABA** North American Butterfly Association

Butterfly Walk

at Picnic Island

JUNE 11
9:00 AM - 11:00 AM

Non-NABA Members: \$5

BUTTERFLYTAMPA.COM

7404 Picnic Island Blvd, South Tampa

Butterfly Walk at Picnic Island - June 11

Join Tampa Bay Butterfly Foundation and NABA Tampa Bay on a butterfly walk at Picnic Island. This is a new location that may be part of the North American Butterfly Association count circles for Tampa Bay. Come join us to help monitoring populations of butterflies in this beautiful park. This will be free for NABA members. Non-NABA members fee: \$5. Please bring payment morning of event. This event is subject to change due to weather.

\$5.00 / Non-NABA Members

REGISTER



TAMPA BAY BUTTERFLY FOUNDATION **NABA** North American Butterfly Association

Butterfly Walk

Non-NABA Members: \$5 **JUNE 26** *at* Violet Cury Preserve
9:00 AM - 11:00 AM

BUTTERFLYTAMPA.COM
Violet Cury Preserve - 1802 Sinclair Hills Rd, Lutz

Butterfly Walk at Violet Cury Preserve - June 26

Join Tampa Bay Butterfly Foundation and NABA Tampa Bay on a butterfly walk at Violet Cury Preserve in Lutz. Come join us to help monitoring populations of butterflies in this beautiful park. This will be free for NABA members. Non-NABA members fee: \$5. Please bring payment morning of event. This event is subject to change due to weather.

\$5.00 / Non-NABA Members

REGISTER



Join us all week long for Pollinator Events!

If you didn't see our recent email about Pollinator Week here is a list of upcoming events. Click the link below to view details and register for an event.

Monday, June 20 Pollinator Power Watch Party: Key Note Speaker – TBD 3:00 – 4:00 PM	Thursday, June 23 Pollinator Power Watch Party: Lovely Lepidoptera Butterfly (and moth) mimicry 3:00 – 4:00 PM 6:30 – 8:00 PM
Tuesday, June 21 M&M Sharpening Tampa Bees Pollinator Power Watch Party: Gardening Culture and Equity 10 AM – 5:30 PM 12 – 4:00 PM 3:00 – 4:00 PM	Friday, June 24 Pollinator Power Watch Party: Pollinator Myth Busters The Truth About Pollinator Gardens 3:00 – 4:30 PM 6:30 – 8:00 PM
Wednesday, June 22 Pollinator Power Watch Party: Bee My Honey Florida's Carnivorous Plants 3:00 – 4:00 PM 6:30 – 8:00 PM	Saturday, June 25 Imperiled Butterflies of Florida 2:00 – 4:00 PM
Sunday, June 26 Kids 'n Nature Story Time Butterfly Release (weather permitting) 1:00 – 3:00 PM 3:00 PM	

[CLICK FOR DETAILS AND TO REGISTER FOR EVENTS](#)

Pardon Our Metamorphosis

Visit our temporary butterfly education exhibit during Little Red Wagon Native Nursery's normal business hours while the Butterfly Conservatory is being constructed. Enjoy live butterflies, their caterpillars



and chrysalis as well as a few native reptiles Tuesdays through Sundays. While the education exhibit is currently free, we do accept donations for Tampa Bay Butterfly Foundation for education, research, habitat restoration and conservation for butterflies and native plants in our area. Please keep visiting

[Butterfly Conservatory of Tampa Bay](http://www.ButterflyTampa.com) website for updates regarding our Grand Opening. For updates, visit:

www.ButterflyTampa.com

Monthly Calendar of Events

June 3: *The Very Hungry Caterpillar's birthday*
 June 4: *Butterfly Education and Awareness Day*
 June 5: *World Environment Day*
 June 5-11: *National Gardening Week*
 June 8: *World Oceans Day*
 June 12: *World Swallowtail Day*
 June 13: *National Weed Your Garden Day*
 June 16: *World Sea Turtle Day*
 June 19: *Father's Day--Gift cards always available!*
 June 20-26: *Pollinator Week Events*
 June 20: *National Eagle Day*
 June 22: *World Rainforest Day*

Visit Little Red Wagon Native Nursery

Little Red Wagon Native Nursery is Hillsborough County's only native nursery. Supporting Florida's native plant & wildlife ecosystem and our natural world, we are located at 4113 Henderson Blvd. in South Tampa.

You can also visit us at LittleRedWagonNativeNursery.com

Email: Info@ButterflyTampa.com

Hours: Tuesdays - Fridays 11-5:30, Saturdays 10-5:30 and Sundays 12-4. Closed Mondays.

This email was sent to [[contact.email]] because you've subscribed on our site or made a purchase.
[Unsubscribe](#)



Little Red Wagon Native Nursery



@nurturenative

omnisend

