

If you cannot see images, please [click here](#)

# Little Red Wagonful

*Nurturing Nature One Wagon at a Time*



October 2021

“What is a weed? A plant whose virtues have not yet been discovered.”  
– Ralph Waldo Emerson

**A**s we flutter into fall, we begin preparing for the monarch migration this month.

## Butterfly of the Month



Monarch

Monarchs are perhaps the most iconic butterfly in North America. Famous for their long migrations, these orange

and black beauties have a wingspan that ranges from 3 3/8 to 4 7/8 inches. A double row of white spots in a black border on the hindwing (see Photo 1) helps distinguish this butterfly from the smaller Viceroy and the darker, root beer-colored Queen. (See Photos 2 and 3.)



Females lay eggs singly on milkweed leaves. (See Photo 4.) The yellow, black and white striped caterpillars that emerge are voracious and can easily devour several large milkweed leaves each day as late instar caterpillars. (See Photo 5.) This appetite highlights just how important it is to have numerous milkweed plants in your garden.

Adult Monarchs nectar on milkweed as well as goldenrods, blazing stars, ironweed and other nectar-rich plants. Unfortunately, on December 15, 2020, the U.S. Fish and Wildlife Service announced that listing the Monarch as endangered or threatened under the Endangered Species Act was warranted but precluded due to higher priorities. Unlike other parts of the country, our area has a year-round Monarch population, so please take steps to conserve this species by planting native species that support this beautiful butterfly. Please also avoid planting non-native tropical milkweed. Research shows that Monarchs breeding on tropical milkweed have higher levels of *Ophryocystis elektroscirrha* ("OE"), a debilitating protozoan parasite. You can learn more about this problem here.

## Host Plant Of The Month





© ANITA CAMACHO

### Aquatic milkweed - *Asclepias perennis*

Aquatic milkweed (*Asclepias perennis*) a great Florida native milkweed, but quite a different species from Swamp Milkweed (*A. incarnata*). As its common name implies, aquatic milkweed occurs in a variety of wetland habitats, including semi-shaded forests in native Florida habitats which experience drought before rainy season commences to which it can handle from my experience. It can survive lower amounts of direct sunlight than our other native species. It can become lankier during the season but still a terrific native as it is available all year to our beloved Monarchs. Aquatic milkweed can tolerate 2-3 months of drought in our Florida sandy soils but also does very well in extremely wet and nearly underwater conditions during the Florida rainy seasons. It has some drought tolerance and is more easily grown than swamp milkweed, especially in the winter months when the Pink swamp milkweed is dormant. A mature height in the late spring can reach about 2 feet. Each is densely covered by lance-shaped bright green leaves approximately 2 inches in length. I have witnessed during milkweed research studies this plant with seed pods and flowers during the Florida winter. The flowers are bright white and very cute. This wildflower is commonly propagated for home gardeners and is quite hardy. I plant it in shady areas around my yard that get a mix of sun and shade as well as some areas that are full sun - the plants do well in pretty much any condition Florida seems to throw at it. If you have sprinklers hitting it regularly, it will receive enough water from my experience.

**\$12.00 / 1 Gallon**

**SHOP NOW**

**Nectar Plant Of The Month**



### Blazing star - *Liatris gracilis*

Blazing star (*Liatris gracilis*) is a short-lived perennial in the Aster family whose native range includes most of Florida and a few counties in Mississippi, Alabama, Georgia, and South Carolina. Found in habitat that includes dry hammocks, oak scrubs, longleaf pine-wiregrass flatwoods communities, mixed oak-pine woodlands, grasslands, sandhills, and limestone outcroppings, blazing star cannot tolerate wet feet and needs well-drained soils. At 4-7 feet tall, the upper 1/3 of blazing star's stalks are covered in tiny purple flowers that are most profuse during the fall months. Like other *Liatris* species, blazing star requires full sun and is a great nectar source for native bees, moths, and butterflies. Plant it in the back of your garden and be prepared to let it go to seed — the seeds attract small birds which snack on them.

**\$9.00 / 1 Gallon**

**SHOP NOW**

## Garden Swag

### Get your Swagon!

These Comfort Grip Soil Scoops have a premium stainless steel blade designed for years of use and is 100% manufactured in the USA. These scoops are great for digging holes, weeding, making seed furrows, and so much more. The Comfort Grip handle



is made from over 50% recycled material. As an added feature, the scoop includes serrated edges that can easily cut through roots, and...wait for it...scooping out pumpkin innards!. Handle colors available: pink, blue, purple and green.

**SHOP NOW**



***Proudly made  
in the USA!!***



## Design with Vines



© ANITA CAMACHO

## Moonflower - *Ipomoea alba*

Moonflower (*Ipomoea alba*) is a vigorous, 20-40 foot vine that introduces an element of mystery to any garden: its large (5-6 inch) showy white iridescent flowers begin to unfurl as the sun sets and close as the sun reaches full strength. With a wonderful sweet fragrance, moonflower is an important nectar source for our native nighttime moths, including the pink-spotted hawkmoth and others in the Sphingid family. (For some interesting facts about this family of moths, check out this US Forest Service article [here](#).)

In our area, moonflower is a long-lived perennial that blooms from mid-summer to fall. Moonflower's native habitat includes mesic hammocks and the margins of swamps and marshes. It requires moist (but not wet) soil and does not tolerate dry conditions well. It grows best in full sun and can be grown in containers. Be sure to plant it near a trellis, fence or other upright structure for support – it will overrun other plants if given the chance. Pair it with [Simpson's stopper](#) (*Myrcianthes fragrans*) for an aromatic experience that both humans and our native pollinators will enjoy.

Please note: moonflower has low severity poison characteristics. Ingestion of any part can cause hallucinations and confusion. As a result, it's a good idea to keep children and pets away from them. It's also best to remove spent flowers before they drop seeds; this will promote robust blooming and minimize the risk of accidental seed ingestion.

**\$8.00 / 1 Gallon**

**SHOP NOW**



THIS WEEKEND ONLY! (While Supplies Last)

Purchase 3 pink swamp milkweed (*Asclepias incarnata*) on October 9th or 10th and get one free!

**\$12.00 / 1 Gallon**

**SHOP NOW**

## Calling All Volunteers

Tampa Bay Butterfly Foundation regularly has a number of single-day and ongoing volunteering opportunities.



### UPCOMING VOLUNTEER OPPORTUNITIES:

**Encore! Technology Park: Oct. 14 @ 9 am - 11:00 am**

Volunteers are needed to help maintain the Tampa Bay Butterfly Foundation-sponsored butterfly garden at Encore Park! located at 1210 E. Harrison St. (Corner of Harrison Street and Hank Ballard St.)

To volunteer, click or copy and paste into a browser: <https://volunteersignup.org/MEYCT>

**CFC Butterfly Garden Maintenance: Oct. 21 @ 9 am - 11:00 am**

The Florida Aquarium, Tampa Bay Butterfly Foundation and FWC's Suncoast Youth Conservation Center are looking for volunteers to assist with habitat maintenance at Center for Conservation site of the Florida

Conservation and Technology Center in Apollo Beach (529 Estuary Shore Lane) as well as their Adopt a Road site along Dickman Road.

To volunteer, click or copy and paste into a browser: <https://volunteersignup.org/7AEJP>

**TBBF Hell Strip Habitat Maintenance: Oct. 28 @ 5 pm – 7pm**

Volunteers are needed to perform Hell Strip Habitat maintenance (4110 W. Estrella St.).

To volunteer, click or copy and paste into a browser: <https://volunteersignup.org/H9WCJ>

**"Thankful For Nature" Kids' Camp Assistants: November 22-24, 8 am - 1 pm**

Adult or High School volunteers are needed to assist with our nature camps for children 5-11 years old. We will have a planning meeting one week in advance of camp (date and time TBD).

To volunteer, click or copy and paste into a browser: <https://volunteersignup.org/4FJKR>



**Little Red Wagon Native Nursery:**

We currently need garden enthusiasts to help us

support the efforts of Tampa Bay Butterfly

Foundation's conservation, restoration, research, and

education efforts. To join our awesome volunteer

team, click or copy and paste into a browser:

<https://volunteersignup.org/9BQTJ>

**ABOUT THE TAMPA BAY BUTTERFLY FOUNDATION:**

With a focus on Florida butterfly species and native plants, environmental education and local awareness in the Tampa Bay area, Tampa Bay Butterfly Foundation was established to support the conservation of butterflies and pollinators and the restoration of their natural wildlife habitats. By working globally with university research partners, providing educational and research opportunities and community outreach programs, and through multi-faceted fundraising efforts, the Foundation aims to elevate public awareness of the importance of butterflies.

The Tampa Bay Butterfly Foundation Inc., a 501(c)(3), is an affiliate of the Butterfly Conservatory of Tampa Bay.

## Pardon Our Metamorphosis



Visit our temporary butterfly education exhibit during our normal business hours while the Butterfly Conservatory is being constructed. Enjoy live butterflies, their caterpillars and chrysalis as well as a few native reptiles Tuesdays through Sundays. While the education exhibit is currently free, we do accept donations for Tampa Bay Butterfly Foundation for education, research, habitat restoration and conservation for butterflies and native plants in our area. Please keep visiting [Butterfly Conservatory of Tampa Bay](https://www.butterflytampa.com) website for updates regarding our Grand Opening. For updates, visit:

[www.butterflytampa.com](https://www.butterflytampa.com)


## Registration Now Open!





**Ages: 5 - 11**  
**8:30 am. - 12:30 pm.**  
**November 22 -24**  
**\$150**  
**4111-A Henderson Blvd.,**  
**Tampa, FL 33629**

**THANKFUL**  
**FOR NATURE**  
**CAMP**



outdoor games, animal encounters,  
 art projects, interactive activities,  
 butterfly releases  
**BUTTERFLYTAMPA.COM**



Discover nature  
 through fun  
 & creative  
 outdoor  
 activities




**REGISTER NOW**

## Monthly Calendar of Events

- October 5: *World Teachers' Day*
- October 13: *International Day for Natural Disaster Recovery*
- October 14: *International e-Waste Day*
- October 15-17: *Florida Birding Festival*--LRW & TBBF will be participating 15th & 16th.
- October 20: *National Sloth Day*
- October 21: *National Reptile Awareness Day*
- October 24: *International Day of Climate Action*
- October 26: *National Pumpkin Day*
- October 28: *National First Responders' Day*
- October 31: *Halloween*--Come to LRW in costume to trick-or-treat



### BUTTERFLY WALK AT PICNIC ISLAND

Join Tampa Bay Butterfly Foundation on a butterfly walk. Species that could be seen include Cloudless sulphur, Orange-barred sulphur, White peacock, Zebra longwing, Viceroy, Statira sulphur, Dainty Sulphur, Common buckeye, Mangrove buckeye, Fiery skipper, Gulf fritillary, Phaon crescent, Cassius blue, Ceraunus blue, Monarch, Common white checkered skipper, Tropical white checkered skipper, and more. This is a new location that may be part of the North American Butterfly Association count circles for Tampa Bay. Come join us to help monitoring populations of butterflies in this beautiful park. This is a free event with limited spots, so register now!

**REGISTER NOW**



# REPTILE AWARENESS DAY



REGISTER AT:  
**BUTTERFLYTAMPA.COM**

**OCTOBER 21, 2021**

**6:00 - 7:00 PM**

ADULTS /CHILDREN: **\$10.00**



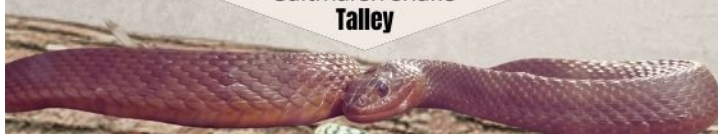
TAMPA BAY  
BUTTERFLY  
FOUNDATION



Tampa Bay Butterfly Foundation Gallery  
4111-A Henderson Blvd., South Tampa  
(next door to Little Red Wagon Native Nursery)

Our reptile specialist, Ian Alton, will give a presentation  
and you can meet our reptile ambassadors.

Red Mangrove  
Saltmarsh snake  
**Talley**



Apalachicola kingsnake  
**Brooks**



**REGISTER NOW**





**Whites & Sulphurs**

**Sunday, October 24, 2021**  
**10 am – 12 pm**  
**\$25.00/person**  
**INCLUDES CONTINENTAL BREAKFAST AND COCKTAILS**

**Anita Camacho will present on the whites and sulphurs in the Tampa Bay area, their host plants, habitats, and more!**

**ADULTS 21 AND OLDER**

**Tampa Bay Butterfly Foundation Gallery**  
**4111-A Henderson Blvd., South Tampa**  
**(next door to Little Red Wagon Native Nursery)**  
**BUTTERFLYTAMPA.COM**

© JOHN LAMPKIN

**REGISTER NOW**

**Visit Little Red Wagon Native Nursery**

Little Red Wagon Native Nursery is Hillsborough County's only native nursery. Supporting Florida's native plant & wildlife ecosystem and our natural world, we are located at 4113 Henderson Blvd. in South Tampa.

You can also visit us at [LittleRedWagonNativeNursery.com](https://www.littleredwagonnursery.com)

Email: [Info@ButterflyTampa.com](mailto:Info@ButterflyTampa.com)

Hours: Tuesdays - Fridays 11-5:30, Saturdays 10-5:30 and Sundays 12-4. Closed Mondays.

This email was sent to [[contact.email]] because you've subscribed on our site or made a purchase.  
[Unsubscribe](#)



Little Red Wagon Native Nursery



@nurturenative

**omnisend**

Ecommerce Email Marketing